

**PUBLIC PATH CREATION ORDER
HIGHWAYS ACT 1980**

HERTFORDSHIRE COUNTY COUNCIL

**Hertfordshire County Council
(Royston and Bassingbourn-cum-Kneesworth Footpath)
Creation Order 2022**

This Order is made by Hertfordshire County Council ("the authority") under section 26 of the Highways Act 1980 ("the 1980 Act") because it appears to the authority that, having regard to the matters set out in section 26(1), there is a need for a public footpath over the land to which this Order relates, and that it is expedient that the path should be created.

The North Herts District Council and South Cambridgeshire District Council have been consulted as required by section 26(3) of the 1980 Act.

BY THIS ORDER

1. There shall be at the end of 120 days from the date of confirmation of this Order a public footpath over the land at Royston and Bassingbourn-cum-Kneesworth described in Part 1 of the Schedule to this Order and shown by a bold broken line on the plan attached to this Order ("the Order Plan").
2. The rights conferred on the public under this Order shall be subject to the limitations and conditions set out in Part 2 of the Schedule.

IN WITNESS whereof the COMMON SEAL of HERTFORDSHIRE COUNTY COUNCIL was hereunto affixed this day of 2022

The Common Seal of
HERTFORDSHIRE
COUNTY COUNCIL
was hereunto affixed
in the presence of:-

Authorised Signatory

SCHEDULE

**PART 1
DESCRIPTION OF LAND**

A public footpath commencing from TL 3440 4093 (point D on the Order Plan) and running north north west for approximately 395 metres to TL 3427 4130 (point O on the Order Plan). Continues across the bridge over the A505 Royston Bypass for approximately 60 metres to

TL 3422 4133 (point Q on the Order Plan) crossing the county boundary at TL 3423 4133 (point P on the Order Plan). Continues generally south west following the track on the south east field edge, north of the A505, for approximately 625 metres to join Bassingbourn-cum-Kneesworth Footpath 17 at TL 3380 4088 (point R on the Order Plan) at the county boundary.

Width:

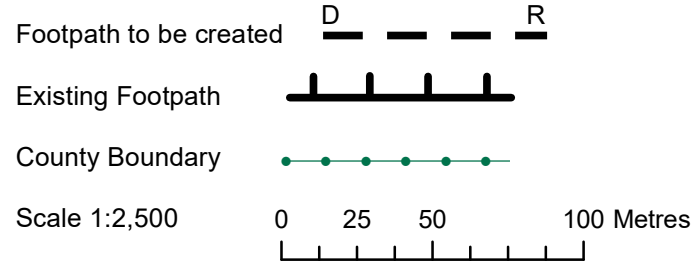
- 4 metres between TL 3440 4093 (point D on the Order Plan) and TL 3430 4119 (point N on the Order Plan), widening to
- 5 metres between TL 3430 4119 (point N on the Order Plan) and TL 3427 4130 (point O on the Order Plan), widening to
- 5.8 metres between the parapets on the bridge between TL 3427 4130 (point O on the Order Plan) and TL 3422 4133 (point Q on the Order Plan),
- 3 metres between TL 3422 4133 (point Q on the Order Plan) and TL 3380 4088 (point R on the Order Plan).

PART 2
LIMITATIONS AND CONDITIONS

None

Draft

This plan forms part of the Hertfordshire County Council
(Royston and Bassingbourn-cum-Kneesworth Footpath)
Creation Order 2022



Appears on Hertfordshire DM page no. 3 and
Cambridgeshire DM sheet ref. TL34SW

BASSINGBOURN-CUM-KNEESWORTH,
CAMBRIDGESHIRE

ROYSTON,
HERTFORDSHIRE

A505 Royston Bypass

Bassingbourn-cum-Kneesworth Footpath 17

Royston Footpath 17

© Crown copyright and database rights 2022
Ordnance Survey 100019606. Use of this data
is subject to terms and conditions. You are not
permitted to copy, sub-licence, distribute or sell
any of this data to third parties in any form.
(This restriction may not apply to HCC and its
licenced contractors agents and partners.)

